



# VIVA COLLEGE SCHOOL-JINJA

PRIMARY LEAVING SPECIAL EXAMINATION 2025

**INTEGRATED SCIENCE**

*Time Allowed: 2 hours 15 minutes*

Index No.	Random No.						Personal No.		

Candidate's Name: .....

Candidate's Signature: .....

School Random No: .....

District ID: .....

**Read the following instructions carefully:**

1. Do not write your **school** or **district** name anywhere on this paper.
2. This paper has two sections: **A** and **B**. Section **A** has 40 questions and section **B** has 15 questions. The paper has **10 printed pages**.
3. Answer **all** questions. **All** answers to both sections **A** and **B** must be written in the spaces provided.
4. All answers **must** be written using blue or **black** ball point pen or ink. Any work written in pencil will **not** be marked.
5. Unnecessary **changes** in your work and handwriting that cannot easily be read may lead to **loss of marks**.
6. Do not fill anything in the table indicated: "**For Examiners' Use only**" and boxes inside the question paper.

FOR EXAMINERS' USE ONLY		
Qn. No	MARKS	EXR'S NO.
1-10		
11-20		
21-30		
31-40		
41-43		
44-46		
47-49		
50-53		
54-55		
TOTAL		

## **SECTION A (40 MARKS)**

1. Name any one food value supplied to the human body from food eaten.

.....

2. State the force which reduces weight of objects.

.....

3. Which sense organ also regulates human body temperature?

.....

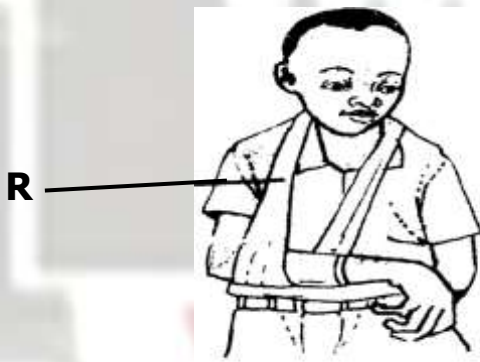
4. Write down any one way in which erupting volcanoes are harmful to wild animals.

.....

5. Mention any one way in which fungi support human life.

.....

**The diagram below shows a casualty with an arm under treatment. Study and use it to answer questions 6 and 7.**



6. Identify the first aid component marked **R**.

.....

7. State the importance of keeping the arm of the casualty above motionless.

.....

8. By what process is soil formed from small particles of rocks?

.....

9. Give any one example of a flatworm.

.....

10. How does observing proper hygiene in a hutch reduce on outbreak of rabbit diseases on a farm?

.....

11. State any one similarity between saliva and gastric juice produced in the alimentary canal of man.

.....

12. Name any one source of fibre to a textile industry.

.....

13. Write down one way of controlling the spread of athlete's foot among school children.

.....

14. Apart from staying in the same habitat, give one other characteristic of social insects.

.....

15. What is a joint?

.....

.....

16. Give one way in which tubal ligation is helpful in child spacing.

.....

17. How many times is polio vaccine given to babies in life time?

.....

18. State any one reason why a farmer would prefer rearing cattle using paddock grazing method.

.....

19. How are dental cavities dangerous in humans?

.....

20. Give one advantage of weeding tuber crops at an early stage of their growth.

.....

21. Mention any one substance used in prevention of rusting of metals.

.....

22. Write down one way in which a guitar differs from a trumpet in terms of sound production.

.....

.....

23. State the reason why worker bees collect water and nectar from the environment.

.....

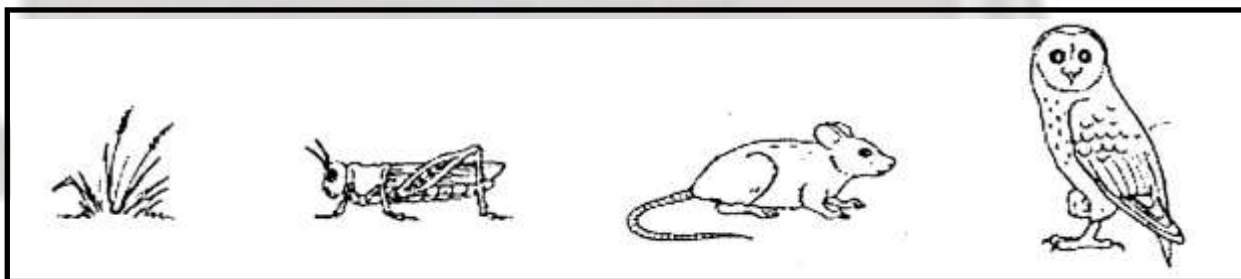
24. How does carbon dioxide released from an extinguisher put out a small burning fire?

.....

25. State any one importance of health parades in schools.

.....

**The diagram below shows how living things obtain food in the environment. Study and use it to answer questions 26 and 27.**



26. By the use of arrows, indicate the flow of energy from the producer to the last consumer.

.....

27. Explain what would happen to rats when all owls die in the above feeding pattern.

.....

28. Name any one material used for trapping residue during filtration of water at home.

.....

29. Apart from being expensive, state one other disadvantage of bottle feeding to a Mother.

.....

30. Name the agent that disperses seeds with sticky hair.

.....

31. Give any one property of magnets.

.....

32. State any one reason why farmers wash udders of dairy cattle with warm water before milking.

.....

33. State what happens to the lungs when the diaphragm contracts and flattens in human beings.

.....

34. What type of feed is given to broilers below 2 weeks?

.....

35. Write down one activity done to control the spread of diarrhoeal diseases through **4Fs** germ path.

.....

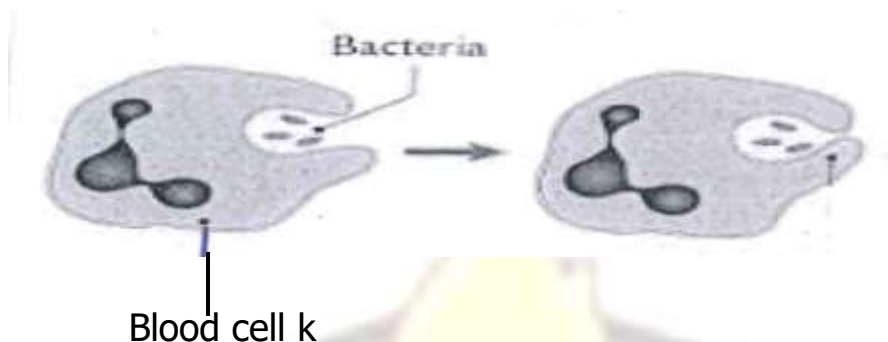
36. Give one reason why solid state does not allow heat transfer by convection.

.....

37. State one importance of sorting wastes before disposal.

.....

The diagram below shows how the human body fights against disease causing germs. Study and use it to answer questions 38 and 39.



38. Name the blood cell marked **k**.

.....

39. State how the above blood cell is fighting bacteria germs in the diagram.

.....

40. Give any one indicator of heat period in nanny goats.

.....

### **SECTION B (60 MARKS)**

41a) Give any two examples of fossil fuels used for cooking.

(i) .....

(ii) .....

b) What type of electricity is produced from fossil fuels?

.....

c) State any one way of conserving fossil fuels in the environment.

.....

42a) Name one example of a conductor of electricity under the following groups;

(i) Solid conductors of electricity

.....

(ii) Liquid conductors of electricity

.....

b) Explain how proper insulation of electric wires safeguards a house from electrical fire. (2 marks)




.....

.....

.....

.....

**43. Below are some garden tools used for various farm activities. Study and use them to answer questions that follow.**

		
<b>S</b>	<b>T</b>	<b>W</b>

a) Identify the garden tools marked **S** and **W**.

- (i) **S** .....
- (ii) **W** .....

b) How is garden tool **T** useful in making of compost manure?

.....

c) State any one way of caring for simple garden tools.

.....

44a) Name any one component of an eclipse.

.....

b) State what makes words written on a piece of paper and placed under a glass prism to appear raised and on a different line.

.....

c) On which part of a lens camera is a real image formed?

.....



d) Apart from being real, state one other characteristic of an image formed by a lens camera.

.....

45a) Write down the meaning of the following terms;

(i) Digestion

.....

.....

(ii) Enzyme

.....

.....

b) State any one characteristic of enzymes.

.....

c) Explain how the digestive system is helpful during the process of respiration in man.

.....

.....

46a) Mention any one feature used by mammals for defence.

.....

b) State two similarities between mammals and birds.

(i) .....

.....

(ii) .....

.....

c) Name the class of mammals with blubber.

.....

47a) State any one quality of good soil that supports crop growth.



.....

b) Which agent causes splash erosion?

.....

c) Give any one example of an artificial fertilizer commonly used by farmers to improve on soil fertility.

.....

d) Write down any one disadvantage of using artificial fertilizers.

.....

48a) Give one reason why essential drugs should be;

(i) kept in a cool dry place.

.....

(ii) kept away from dust.

.....

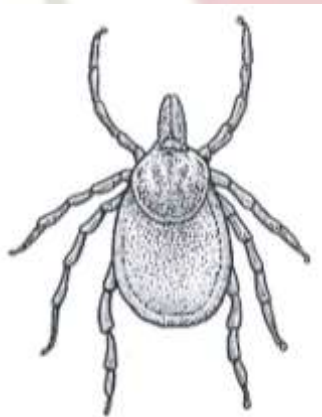
b) Write down two ways in which health workers safeguard their patients from drug poisoning.

(i) .....

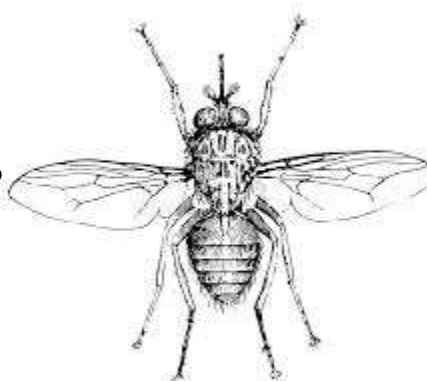
(ii) .....

**49. Below are two cattle pests. Study and use them to answer questions that follow.**

**A**



**B**



a) Identify the cattle pest marked **B**.

.....

b) Mention one disease transmitted to cattle through bites by pest **A**.

.....

c) Apart from transmitting disease causing germs, give one other danger of pests to cattle.

.....

d) State any one practice done on a livestock farm to control cattle pest **A**.

.....

50a) Give two reasons why evaporation is regarded as a physical change.

(i) .....

(ii) .....

b) Apart from evaporation, name one other physical change in states of matter.

.....

c) State any one activity in which evaporation is helpful at home.

.....

**51. The table below shows excretory organs, location, excretory products they remove and diseases that affect them. Study and complete it correctly.**

<b>Excretory organ</b>	<b>location</b>	<b>Waste product removed</b>	<b>Disease that attacks the organ.</b>
(i) .....	Abdominal cavity	Bile pigments	Hepatitis B
Lungs	(ii) .....	Carbon dioxide and water vapour	Tuberculosis
Skin	External body surface	Sweat	(iii) .....
Kidneys	Abdominal cavity	(iv) .....	Bilharzia

52a) Write down two anti-social behaviours practised in schools.

(i) .....

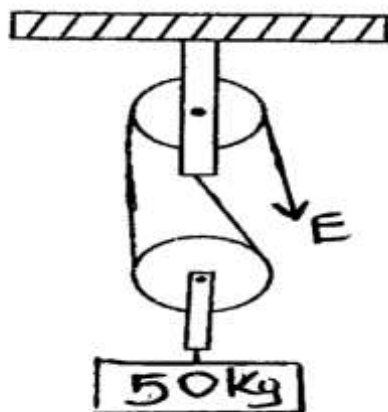
(ii) .....

b) Outline any two practices that can help to lower anti-social behaviours in schools.

(i) .....

(ii) .....

**53. The diagram below shows a pulley system. Study and use it to answer questions that follow.**



a) Name the pulley system shown above.

.....

b) Calculate the effort needed to overcome the given load using the above pulley system

c) Give any two uses of pulleys in our daily life.

(i) .....

(ii) .....

54a) Give one importance of rainfall to plants.

.....

b) You are provided with a kettle full of water, a stove with burning charcoal and a glass bottle with cold water. Describe how you would use the above materials to make simple rain cycle. **(3 marks)**

.....

.....

.....

.....

.....

.....

.....

55a) Mention the use of the following materials in promoting sanitation in a classroom;

(i) broom: .....

(ii) soapy water: .....

b) Why should litterbins used in hospitals have lids (covers) on them?

.....

c) How does staying in a clean environment help to keep a person healthy for a long time?

.....

**END**