



KAMPALA CITY EXAMINATIONS BOARD

QUALITY CHECK THREE

2025

INTEGRATED SCIENCE

Time Allowed: 2 hours 15minutes

Random No.						Personal No.		

Candidates' name:

Candidates' signature:

District ID No.

--	--	--	--

Read the following instructions carefully:

1. Do not write your **school** or **district name** anywhere on this paper.
2. This paper has **two** sections: **A** and **B**. Section **A** has **40** questions and section **B** has **15** questions. The paper has **16 printed pages**.
3. Answer **all** the questions. **All** the answers for both sections **A** and **B** must be shown in the spaces provided.
4. **All** the answers **must** be written using a **blue** or **black** ball point pen or ink. Any work written in pencil other than drawings will **not** be marked.
5. Unnecessary **changes** in your work and handwriting that cannot be read easily may lead to **loss of marks**.
6. Do not fill anything in the table indicated: **"FOR EXAMINERS' USE ONLY"** and in the boxes inside the question paper.

FOR EXAMINERS USE ONLY		
QN NO.	MARKS	EXR'S NO.
1-10		
11-20		
21-30		
31-40		
41-43		
44-46		
47-49		
50-52		
53-55		
TOTAL		

Official lines: 0743049694 0770744391 @ city exams

SECTION A:40MARKS

Questions **1** to **40** carry **one** mark each

1. Name the type of electricity gained by a plastic pen when rubbing on the hair.

.....

2. Mention the body organ that regulates the amount of water in the blood.

.....

3. Identify the type of change that occurs when one burns a piece of wood to ash.

.....

4. Write **one** example of a water pollutant.

.....

5. Mention **one** material used to remove germs from our hands after a latrine visit.

.....

6. Give **one** use of vultures in the environment.

.....

7. Write **one** example of an energy resource got from animals.

.....

8. Which body system is affected by malaria parasites?

.....

9. Give **one** way of managing a sunny weather.

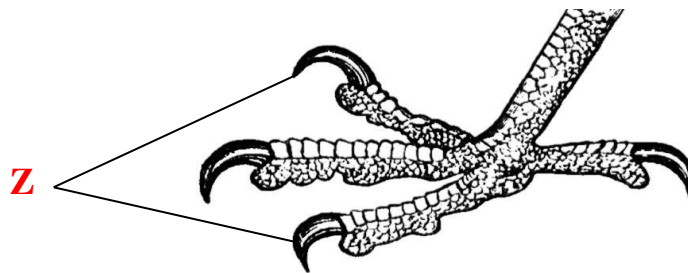
.....

10. Why do crop farmers always dry their harvested seeds before storing them?

.....



Study the diagram of a foot of a bird below and answer the question **11** and **12**.



11. Name the structure marked **Z**.

.....

12. Give the function of structure **Z** to an eagle.

.....

13. State the meaning of the term "vulnerable groups of people".

.....

.....

14. Give the reason why trachea is able to remain open all the time.

.....

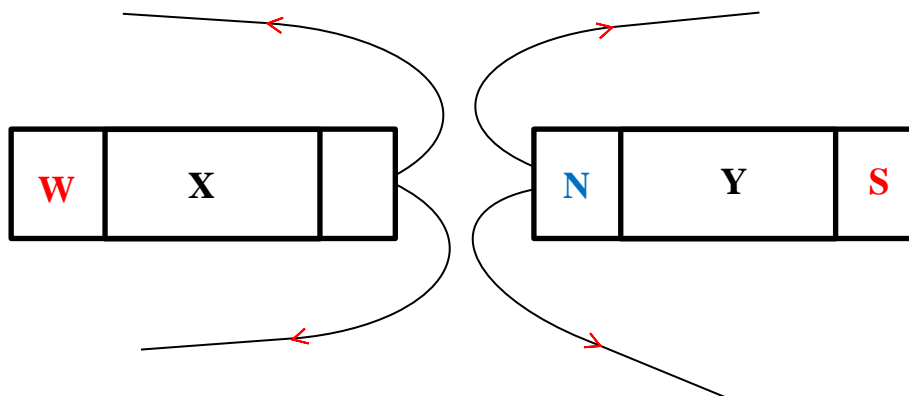
.....

15. Name the body part where blood cells are made.

.....

16. Give **one** advantage of using a VIP latrine over a conventional pit latrine.
-
17. State **one** way how electricians prevent electric shocks.
-
18. Identify the ear disorder caused by having too much ear wax.
-
19. Name the type of blood commonly carried by most arteries.
-

Study the illustration below carefully and answer the question **20** and **21**.



20. Which property of magnets is shown above?
-

21. Name the pole marked **W**.



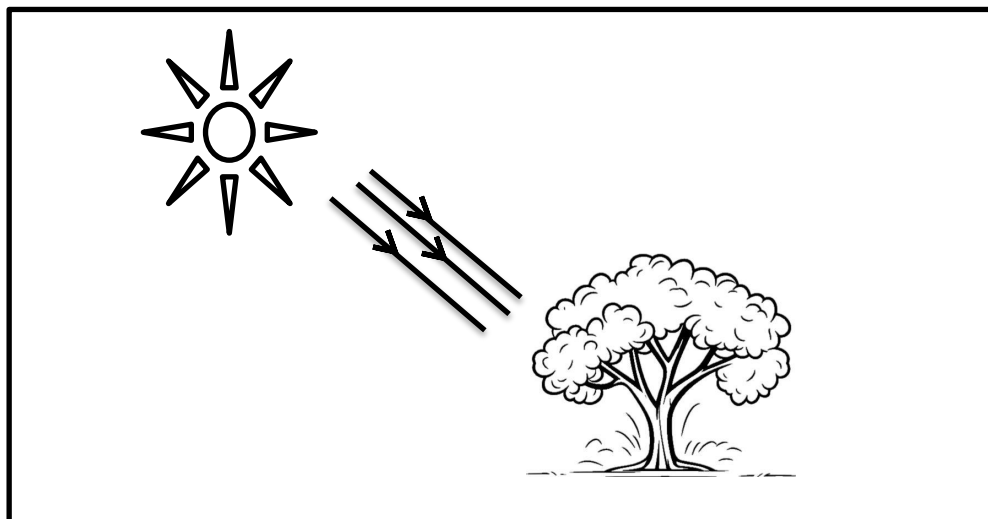
.....

.....

22. Give the commonest way through which tapeworm enters the human body.

.....

23. Draw a shadow of the tree according to the position of the sun in the space provided.



24. Give **one** use of shadows to people in the environment.

.....

25. State the main role of the sun in a food chain.

.....

26. In which **one** way do crop pests affect crop production?

.....

27. Give **one** use of a cotyledon in a bean seed.

.....

28. Name the natural change that is prevented through conserving swamps.

.....

29. State **one** way through which a school girl can avoid early pregnancy.

.....

The diagram below shows a sanitary facility. Study it and answer the question **30** and **31**.



30. Name any **one** disease which can be prevented by using the above sanitary facility.

.....



31. Give **one** way in which the above sanitary facility is able to prevent the user's hands from contamination after washing.

.....

32. Write **one** advantage of steaming up in cattle management.

.....

33. Why should invalid people be given meals containing more proteins?

.....

34. As a p.7 child, give **one** role you can play to promote immunisation in your community.

.....

35. Mention **one** method used by crop farmers to prevent soil exhaustion.

.....

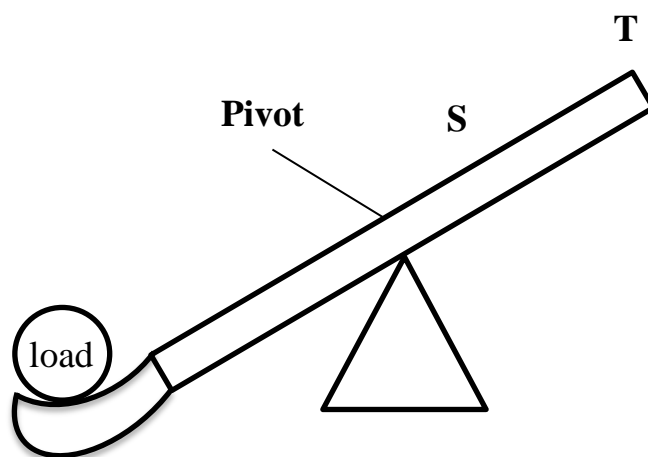
36. State what happens to a sound wave when it meets a soft surface.

.....

37. Give **one** way in which vitamin **D** helps in the prevention of rickets.

.....

The diagram below shows a simple machine . Study it and answer the question **38** and **39**.



38. To which class of simple machine does the above one belong?

.....

39. Give **one** reason why a person is likely to use less effort at point **T** when using the above machine.

.....

40. Which animal fibre is obtained from merino sheep by shearing?

.....



SECTION B: 60 MARKS

Answer all questions in this section

*Question **41** to **55** carry **four** marks each*

41. (a) Write down **two** industrial uses of water.

(i)

(ii)

(b) State what happens to the following when water turns into ice.

(i) density of water

.....

(ii) Volume of water

.....

42. Complete the table below correctly.

VECTOR	DISEASE	HOW IT SPREADS
Culex mosquito	Through bites
.....	Trachoma	Landing on dirty eyes
Ticks	Typhus fever
Itchmites	Through bites



43. (a) Give **two** causes of burns in homes.

(i)

(ii)

- (b) Identify the degree of burns that lead to formation of blisters.

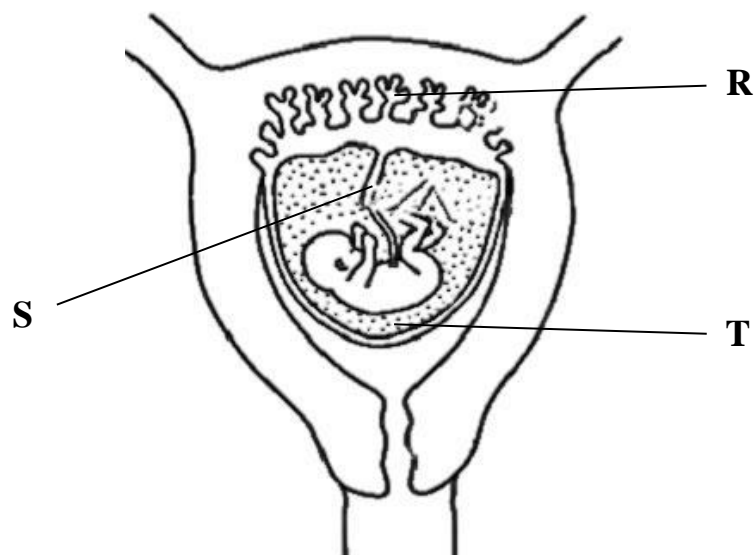
.....

.....

- (c) State the reason why it is advisable to give plenty of drinks to casualties with third degree burns.

.....

44. The diagram below shows a developing foetus in a womb. Study it and answer the questions that follow.



- (a) Name the substance labeled **T**

.....

- (b) Give **two** uses of the part labeled **S**.

(i)

(ii)



- (c) In which way does the part labelled **R** help an **HIV** positive mother to prevent the spread of the virus to her unborn baby?

.....

45. (a) State **two** importance of excretion to human body.

(i)

(ii)

- (b) Mention **one** waste material removed from the body by the following excretory organs

(i) lungs

(ii) livers

46. The list below shows different plants common in our environment . Study them and answer the questions that follow.

List **A**

Horsetail.

Mosses

Ferns.

Liverworts.

List **B**

Beans

Maize

Sorghum

Groundnuts.

List **C**

Podo

Pine

Cypress

Fir.



- (a) Give the difference between the plants in list **A** and those in list **B**.

.....

.....

- (b) State **one** characteristic common to all the plants in the above lists.

.....

- (c) Why would you group a mushroom together with the plants in list **A**?

.....

(d) Mention **one** example of a plant you can add to those in list **C**.

.....

47. (a) Give **two** dangerous effects of cutting down trees in the environment.

(i)

(ii)

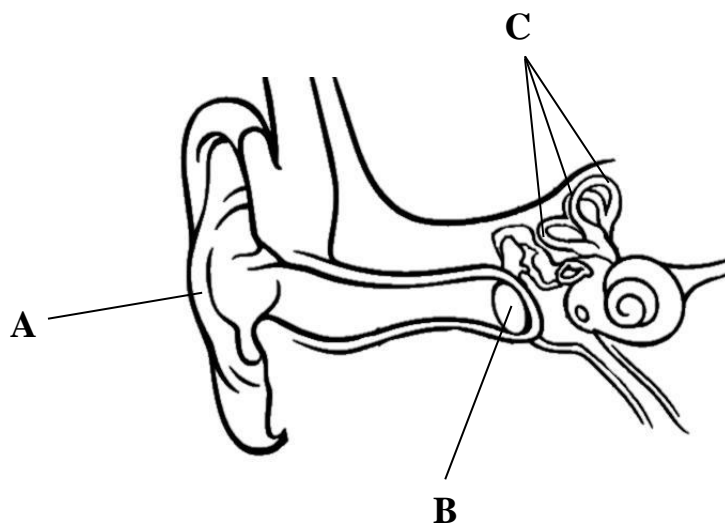
(b) Write **one** excuse people give for cutting down trees.

.....

(c) State **one** advantage of conserving trees.

.....

48. The diagram below shows the mammalian ear. Study it and answer the questions that follow.



(a) Name the part marked **B** and **C**.

(i) **B**
.....

(ii) **C**
.....

(b) How is part marked A able to remain open all time?

.....

.....

(c) Use an arrow and letter **D** to show the part which converts sound vibration into nerve impulses on the diagram above.

49. (a) Mention **two** examples of alcoholic drinks.

(i)

(ii)

(b) As a p.7 child, give **one** way how you can avoid alcoholism.

.....

.....

(c) State the law that safeguards children from alcoholism in Uganda.

.....



50. (a) Give **two** uses of heat insulators to people.

(i)

(ii)

(b) Mention **one** example of heat insulator.

.....

(c) State **one** reason why most cooking equipment are made out of aluminium.

.....

.....

51. Write the method used to separate the following mixtures.

(a) A mixture of maize flour and iron bits.

.....
.....

(b) A mixture of salt and water.

.....
.....

(c) A mixture of bad beans and good beans.

.....
.....

(d) A mixture of water and alcohol.

.....
.....

52. (a) State **two** importance of keeping records on a rabbit farm.

(i)

(ii)

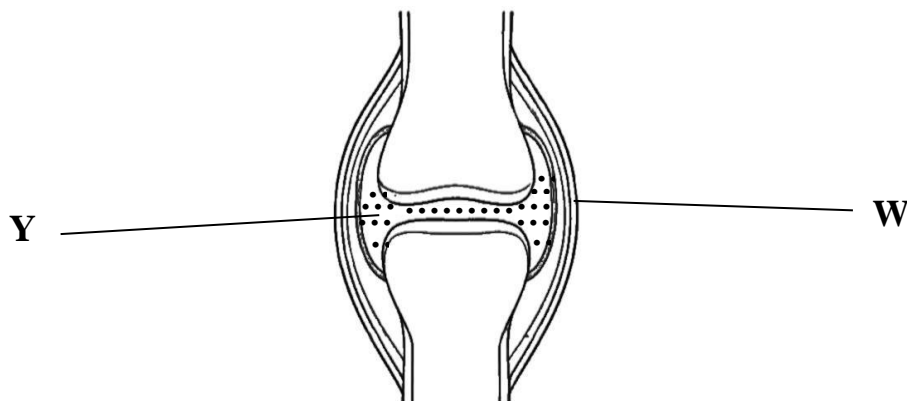
(b) Give **two** advantages of rearing rabbits over goats.

(i)

(ii)



53. The diagram below shows an example of a movable joint .Study it and answer the questions that follow.



- (a) Name the type of movable joint shown above.

.....

.....

- (b) State the function of structure marked **W**.

.....

.....

- (c) Identify the injury that commonly occurs on part mark **W**.

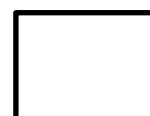
.....

.....

- (d) Give the adaptation of substance **Y** to its function.

.....

.....



54. (a) Name the germs which causes gonorrhea.

.....

.....

(b) State **two** signs of gonorrhea infection in female.

(i)

(ii)

(d) Give the best way married people can protect themselves from **STIs** like Gonorrhea.

.....

.....

55. (a) Identify **one** use of friction force to the following groups of people.

(i) butchers

.....

(ii) School children

.....

(b) Give **one** disadvantage of friction force to people.

.....

.....

(c) State **one** way mechanics reduce friction in machines.

.....

.....

THE END



Turn Over