



The HIGHWAY EXAMINATIONS

PRIMARY SEVEN QUALITY ASSESSMENT

2025

INTEGRATED SCIENCE

QUALITY MARKING

GUIDE

Read the following instructions carefully:

1. Do not forget to write your **school** and **district name** on this paper.
2. This paper has two sections: A and B.
Section **A** has **40** questions and Section **B** has **15** questions. This paper has 13 printed pages.
3. Answer **all** questions. **All** the working for both sections **A** and **B** must be shown in the spaces provided.
4. **All** answers **must** be done using a **blue ballpoint** pen or ink. Any work done in pencil will **not** be marked except drawings and diagram.
5. Unnecessary **changes** in your work and handwriting that cannot be easily read may lead to **loss of marks**.
6. Do not fill anything in the table indicated
"For examiners' use only" and the boxes inside the question paper.

FOR EXAMINERS' USE ONLY		
Qn. No.	MARKS	EXR'S No.
1 - 10		
11 - 20		
21 - 30		
31 - 40		
41 - 43		
44 - 46		
47 - 49		
50 - 52		
53 - 55		
TOTAL		

© 2025 The Highway Examinations 0740888097/ 0783836153

The printers of the HIGHWAY EXAMINATIONS, Holiday packages, Homework, book covers, Topical questions and Teachers' workshops. Located at Nansana Municipality Kampala

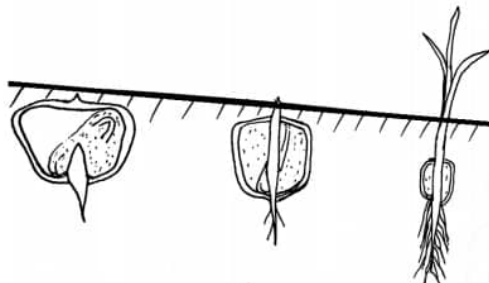
SECTION A: 40 MARKS

*Answer **all** questions in this section.*

Questions 1 to 40 carry two marks each.

1. Name the component of soil formed when dry grass rots.
✓ Humus
Reject: Rock particles
2. Apart from mechanical method, state any **one** other method of storing sound.
✓ Magnetic
✓ Electromagnetic method
Reject: Recording and Notation / Writing
3. Mention the source of energy used by plants in the process of photosynthesis.
✓ Sun
4. Name the type of teeth which is missing in the milk set of teeth.
✓ Premolars
✓ Reject: molars
5. State any **one** way of keeping the circulatory system in a good working condition.
✓ Feeding on a balanced diet.
✓ Doing regular physical exercise.
✓ Going for regular medical checkups.
✓ Avoid smoking.
✓ Limit eating only fatty food.

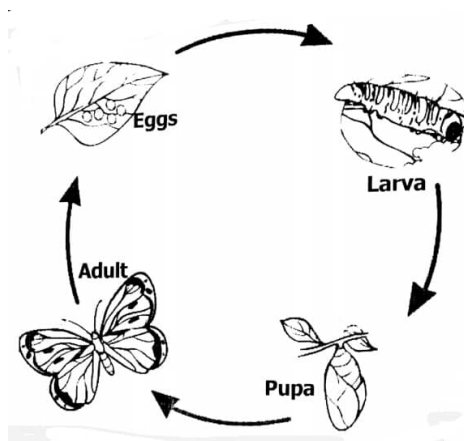
The illustration below shows a germinating maize plant. Study and use it to answer question 6 and 7.



6. Name the type of germination shown above.

- ✓ Hypogeal germination.
- 7. Name the group of flowering plant to which the above belong.
 - ✓ Monocotyledonous plants / Monocots
- 8. State how canine teeth are able to tear food.
 - ✓ They are sharp pointed. Reject: Any answer with feature and function
- 9. Name any **one** example of root tubers.
 - ✓ White yams / sweet potatoes / cassava / carrots / turnips
- 10. When a pen and a paper is released from the top of the building, the pen reached the ground faster than a paper. Give a reason why a pen reached the ground faster than a paper?
 - ✓ A pen has less air resistance than a paper.
Reject: Due to force of gravity.
- 11. Give a reason why a boat floats on water.
 - ✓ A boat displaces amount of water equal to its weight.
- 12. Identify the type of mechanical energy possessed by a passenger seated in a moving vehicle.
 - ✓ Kinetic energy. Reject: Potential energy

The illustration below shows a life cycle; study and use it to answer questions 13 and 14.



13. Name the type of lifecycle shown above.
- ✓ Complete cycle.
14. Give a reason to support your answer above.
- ✓ The larva stage is completely different from the adult stage in structure and function.
- Reject: It undergoes four stages.
15. State what causes marasmus.
- ✓ Lack of all food values.
 - ✓ Lack of all food nutrient.
- Reject: lack of carbohydrates.
- Note: Marasmus is starvation remember when a person starves you do not lack only one class of food but you will lack all.
16. In which way can a person care for his / her ears.
- ✓ Cleaning using ear cotton swabs.
 - ✓ Listening to music at a low volume.
 - ✓ Going for regular medical checkups.
- Reject: Cleaning using ear buds
17. State any **one** way in which earthworms are important to crop farmers.
- ✓ Improves on soil fertility.
 - ✓ Improves water drainage in the soil.
 - ✓ Helps in the formation of humus.
- Reject: They die to form humus
18. State how hookworms enter the body.
- ✓ By penetrating the bare skin.
- Reject: By walking bare footed.
19. Mention any **one** common accident at home.
- ✓ Burns / scalds / near drowning / drowning / cuts / electric shock / snake bites / falls / knocks
- Reject: Note; that all falls are accidents but not all accidents are falls.

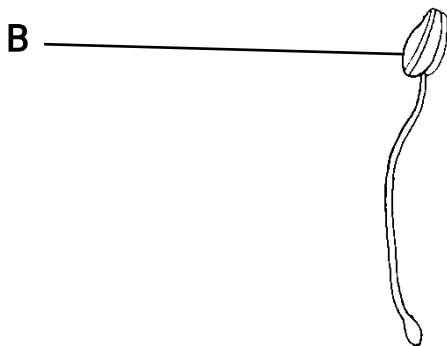
20. Give a reason why farmers carry out docking.
- ✓ To prevent flystrikes
 - ✓ To keep the sheep clean.
- Reject: To ease mating/ To enable the sheep grow fat / To expose the vulva to the ram
21. Mention any **one** type of drugs.
- ✓ Essential drugs
 - ✓ Narcotic drugs
- Reject: Modern / Traditional drugs
22. Name the class of food to which beans belong.
- ✓ Proteins
- Reject: Grow food
23. State the importance of white blood cells to the circulatory system.
- ✓ Defends the body against germs / fight against disease germs.
- Reject: Fight against diseases.
24. State any **one** way feeding on roughages help to prevent constipation.
- ✓ Roughages absorb water from the stool making it soft.
 - ✓ Roughages adds bulk in stool making it easier to pass.
 - ✓ Roughages stimulates intestinal muscle contraction.
25. Mention any **one** material which is made of clay soil.
- ✓ Clay pots / clay tiles / clay cups / clay plates / clay charcoal stove
- Reject: pots / cups / plates / charcoal stove
26. State any **one** way vectors spread germs.
- ✓ By contaminating food
 - ✓ By biting / bites
 - ✓ Through body contact.
- Reject: Through hairy bodies.
27. State the importance of sunlight during photosynthesis.
- ✓ Provides energy needed by plants to make food.
- Reject: Splits water into hydrogen and oxygen.

28. Identify any **one** type of immunity.

- ✓ Natural / Artificial immunity

Reject: Acquired / inherited immunity

The diagram below shows a reproductive part of a flower. Use it to answer questions 29 and 30.



29. Name the reproductive part of the flower in the diagram above.

- ✓ Stamen. Reject: Male part

30. Use letter B to show the part that produces pollen grains.

31. Write down any **one** by-product of respiration.

- ✓ Carbon dioxide / Water vapour

32. Give a reason why it is advisable to sneeze in a handkerchief when in public.

- ✓ To control airborne diseases
- ✓ To prevent droplet infection
- ✓ To prevent spreading mucus to nearby people.

33. State any **one** way in which animals can be used as energy resource.

- ✓ Animals provide energy for transport.
- ✓ Animals provide energy for ploughing.
- ✓ Animals provide energy for pulling carts.
- ✓ Animals provide energy for turning machines.

34. State **one** way in which the human skeleton is useful to the circulatory system.

- ✓ It protects the heart.
- ✓ It helps in the production of blood cells.

The diagram below shows an item used to manage weather. Study and use it to answer questions 35 and 36.



35. Name the item shown in the diagram above.
- ✓ Umbrella.
36. State the element of weather that requires people to use the above item.
- ✓ Rainfall / Sunshine
37. Give a reason why breast milk is considered to be the best food for babies.
- ✓ Breast milk contains all food values needed by the baby.
- Reject: Breast milk contains almost all food values
- Note: Breast milk contains carbohydrates, proteins, vitamins, lipids and mineral salts
38. Name the element of primary health care which promotes quick recovery of the casualty.
- ✓ First aid
- Reject: Accidents and first aid
- Note: First aid involves giving initial help to accident victim before getting further treatment.
39. State the importance of gills to a mushroom.
- ✓ Produces spores / It produces spores.
 - ✓ Produces and disperse spores.
40. Give any one way in which a blacksmith use heat.
- ✓ For melting metals
 - ✓ For shaping metals
 - ✓ For softening metals.
 - ✓ For bending metals.

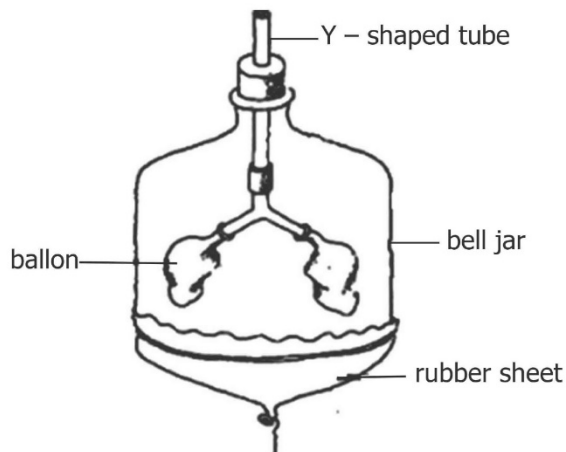
- ✓ For joining metals.
- ✓ For moulding metals.

SECTION B : 60 MARKS

*Answer **all** questions in this section.*

Questions 41 to 55 carry four marks each

41. The diagram below shows a model of the human respiratory system. Study and use it to answer questions that follow.



- (a) What does the straw represent in the above?
- ✓ Trachea / wind pipe / Bronchi
- (b) State what happens to the balloon when breathing in.
- ✓ The balloon expands / The balloon will expand
 - ✓ The balloon increase in size / volume.
- (c) Explain how you can demonstrate breathing in in the above experiment.

(2 marks)

- ✓ Pull the rubber sheet downwards to allow air into the balloon.

42. (a) Mention any **two** activities at home that requires the use of filtration method.

- ✓ When separating water from soil.
- ✓ When separating juice from fruits.
- ✓ When separating tea from tea leaves.
- ✓ When preparing local salt.

- (b) State any **two** ways in which filtration method is important at home.

- ✓ It helps in separating tea leaves from tea.
- ✓ It helps in separating fruit juice from seeds.
- ✓ It helps in preparing local salt from plant ash.
- ✓ It helps in separating water from small rocks.

43. (a) Name any **one** example of natural magnet.

- ✓ Lodestone / magnetite / earth

(b) State any one way of preventing magnets from losing magnetism.

- ✓ Painting magnets to prevent rusting.
- ✓ Keeping magnets with iron keepers.
- ✓ Keeping magnets away from heat.
- ✓ Keeping magnets with unlike poles together.
- ✓ Keeping magnets facing North South direction.

(c) Apart from electric bell, mention any **two** other devices that use electro magnets.

- ✓ Electric alarms / sound amplifiers / radio speakers/ electric motors / electric sirens / Generators

44. (a) Mention any **one** vice in a deep litre house.

- ✓ Egg eating / Feather pecking / cannibalism / egg biding
- Mnemonic: FECE
- ✓ Reject: Toe pecking / vent pecking / skin pecking

(b) Give any **one** cause of poultry vice in a deep litres house.

- ✓ Overcrowding of birds.
- ✓ Poor ventilation in a poultry house.
- ✓ Boredom among birds.
- ✓ Shortage of feeds.
- ✓ Lack of proteins in the diet.

(c) State any **two** ways of controlling poultry vices.

- ✓ Hanging green vegetables in the coop.

- ✓ Regular feeding of birds.
 - ✓ Providing enough space for birds.
 - ✓ Proper stocking.
45. (a) Name the group of non – flowering plants where fern belong.
- ✓ Sporing bearing plants. Reject: Coniferous plants
- (b) State one similarity between pine and cedar in the way they reproduce.
- ✓ Both reproduce by means of seeds.
- (c) Apart from pine and cedar, mention any **two** other plants that reproduce by means of seeds.
- ✓ Fir / cypress / podo / ginkgo / cycad
46. You are provided with the following materials to carry out an experiment to show that soil contains water.
- Dry saucepan, lump of soil, plate
- Describe the steps you would follow.
- (i) Put the lump of soil into the dry saucepan.
 - (ii) Cover the dry saucepan using a plate.
 - (iii) Heat the lump of soil in the dry saucepan for some time.
 - (iv) Remove the plate and check the water droplets.
47. (a) Mention any **one** cattle disease caused by virus.
- ✓ Rinder pest / Foot and mouth disease
- (b) State any **two** ways of controlling viral diseases in cattle.
- ✓ Through regular vaccination.
 - ✓ Through application of quarantine.
 - ✓ Through isolation of infected animals.
- (c) State how isolation of infected animals prevent viral diseases in cattle.
- ✓ It prevents close contact of infected animals with healthy ones.
48. (a) State any **two** dangers of teenage pregnancy to girls.
- ✓ It leads to school dropouts.
 - ✓ It causes birth complications.

- ✓ It may lead to death due to attempted abortion.
- ✓ It leads to forced marriage.
- ✓ It leads to parental reject.
- ✓ It leads to obstructed labour.

(b) Give any **two** ways adolescent girls can avoid teenage pregnancy.

- ✓ Abstaining from pre-marital sex.
- ✓ Avoid bad peer groups.
- ✓ Avoid gifts from strangers.
- ✓ Staying at school.
- ✓ Educating adolescents about body growth and body changes.
- ✓ Reporting cases of rape to concerned people.

49. The information below is designed by young farmers club to start a goat rearing project. Study and use it to answer questions that follow.

Activity	Item	Number	Estimated date
Construction	Shade	2	10/06/2025 up-to-date
Purchasing	Nannies	7	18/07/2025
Vaccination	Nannies	7	19/07/2025
Artificial insemination	Animals on heat	Animals on heat	18/07/2025 up to date

(a) Give the collective name for that above information.

- ✓ Work plan Reject: Record keeping / Breeding record

(b) Give a reason why the club has no interest on Billy goats.

- ✓ They are interested in artificial insemination.

(c) State any **one** way in which artificial insemination is important in the above project.

- ✓ Promotes cross breeding.
- ✓ Prevent venereal diseases / hereditary diseases.
- ✓ Control inbreeding.

(d) In which way is the above information important when starting a poultry keeping business?

- ✓ Helps in time management.
- ✓ Helps in effective planning.
- ✓ Helps in budgeting.
- ✓ Helps in allocating resources.

50. (a) Name the germ that causes malaria.

- ✓ Protozoa. Reject: Plasmodia / plasmodium

(b) In which way does each of the following help to prevent malaria?

(i) Draining stagnant water:

- ✓ It destroys the breeding places for mosquitoes.

(ii) Sleeping under treated mosquito net:

- ✓ It helps to prevent bites from female anopheles mosquitoes.

(c) Give a reason why male anopheles mosquitoes do not transmit malaria to people.

- ✓ They do not feed on human blood.

51. (a) State what is meant by the term weeds.

- ✓ Weeds are unwanted plants in the garden.
- ✓ Reject: weeds are plants that grow in a place where they are not needed.

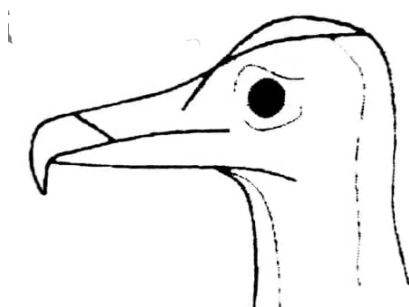
(b) Name the crop growing practice which reduces the weight of the plant.

- ✓ Pruning.

(c) Apart from panga and scateurs, mention two other garden tools used for pruning crops in the garden.

- ✓ Billhook
- ✓ Pruning saw

52. The diagram below shows a beak of the bird study and use it to answer the questions that follow.



- (a) Name the group of birds which have the beak shown above.
- ✓ Scavenger birds.
- (b) Give any **two** examples of birds which have the beak shown above.
- ✓ Vulture
 - ✓ Crow
 - ✓ Marabou stork
- (c) State how the birds with such a beak help to clean the environment.
- ✓ By feeding on leftover flesh / abandoned flesh.

53. (a) Name any one method of harvesting honey.

- ✓ Modern method
- ✓ Traditional method.

(b) State the importance of the following equipment when harvesting honey.

(i) smoker:

- ✓ It is used to produce smoke in order to scare and paralyze bees.
- ✓ It is used to produce smoke which scare bees.

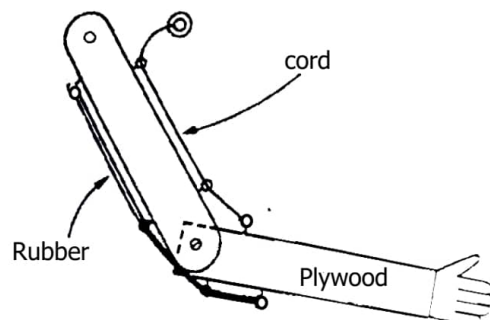
(ii) knife:

- ✓ It is used for cutting combs with honey from the hive.

(c) Mention any one reason why harvesting of honey should not be done using fire.

- ✓ Fire kills bees reducing their population.
- ✓ Smoke from fire contaminates honey.
- ✓ It reduces honey harvesting by killing worker bees.

54. The diagram below shows a model of the human arm. Study and use it to answer the questions that follow.



- (a) Identify the body muscle represented by;
 - (i) The cord:
 - ✓ Biceps
 - (ii) The rubber:
 - ✓ Triceps
- (b) Name the type of human body muscles represented in the modal above.
 - ✓ Voluntary muscles.
- (c) State what happens to the cord when the fore plywood is raised.
 - ✓ The cord will contract / The cord contracts

55. (a) State the units for measuring rainfall.

- ✓ Millimetres (MM)
- (b) Give a reason why rainfall is measured in the above units.
 - ✓ To find how deep rain water has entered the soil.
- (c) Mention any two components of a rain gauge.
 - ✓ Funnel / measuring cylinder / bottle

END