

ARALL EXAMINATIONS BOARD[AEB]

P.7 SPECIAL SET 5 OF 10 2025

INTEGRATED SCIENCE

Time Allowed: 2 hours 15 minutes

Index No.	EMIS No.					Personal No.		

Pupil's Name:

Pupil's Signature:

School Name:

District Name:

Read the following instructions carefully:

1. Do not forget to write your **school** or **district name** on the paper.
2. This paper has two sections: **A** and **B**.
Section **A** has **40** questions and section **B** has **15** questions. The paper has **10** printed pages altogether.
3. Answer **all** questions. **All** working for both sections **A** and **B** must be shown in the spaces provided.
4. **All** answers **must** be written using a **blue** or **black** ball point pen or ink. Any work written in pencil will **not** be marked.
5. Unnecessary **changes** in your work and handwriting that cannot be read easily may lead to **loss of marks**.
6. Do not fill anything in the table indicated: **"For Examiners' use only"** and boxes inside the question paper.

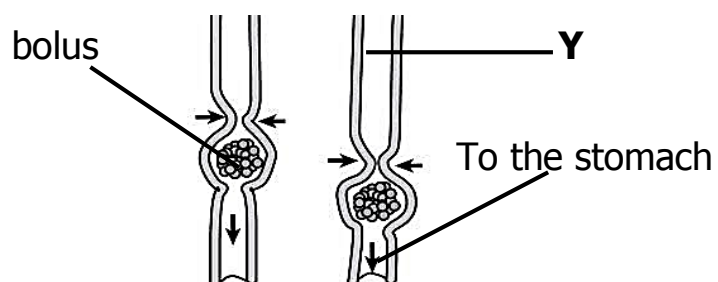
FOR EXAMINERS' USE ONLY		
Qn. No.	MARKS	EXR'S NO.
1 – 10		
11 – 20		
21 – 30		
31 – 40		
41 – 43		
44 – 46		
47 – 49		
50 – 52		
53 – 55		
TOTAL		

SECTION A: 40 MARKS

Questions **1** to **40** carry **one** mark each.

1. Write any **one** natural source of sound.
.....
2. State the type of clouds that resemble cotton piles in the sky.
.....
3. How are monotreme mammals similar to birds in terms of fertilization.
.....
4. Write **one** role played by a school health committee in the control of ringworms at school.
.....
5. State the main feature of sand soil which makes it suitable for cleaning utensils like saucepans.
.....
6. Give **one** way how cooks retain heat in the saucepan during cooking.
.....
7. Besides identification, how is a comb important to a bird?
.....
8. Mention **one** importance of physical changes in the environment.
.....
9. Name the part of a tap root which protects the growing tip from mechanical damage.
.....

The diagram below shows one of the parts of the alimentary canal. Use it to answer questions **7** and **8**.



10. Name the part of the alimentary canal marked **Y**.

.....

11. How does the bolus pass through part labeled **Y** above?



.....

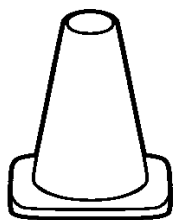
12. Write **one** condition of weather.

.....

13. Give **one** reason why steel is used to make artificial permanent magnets.

.....

The diagram below shows one of the equipment used on a sports pitch. Use it to answer questions **12** and **13**.



14. State the importance of the above equipment on a football pitch.

.....

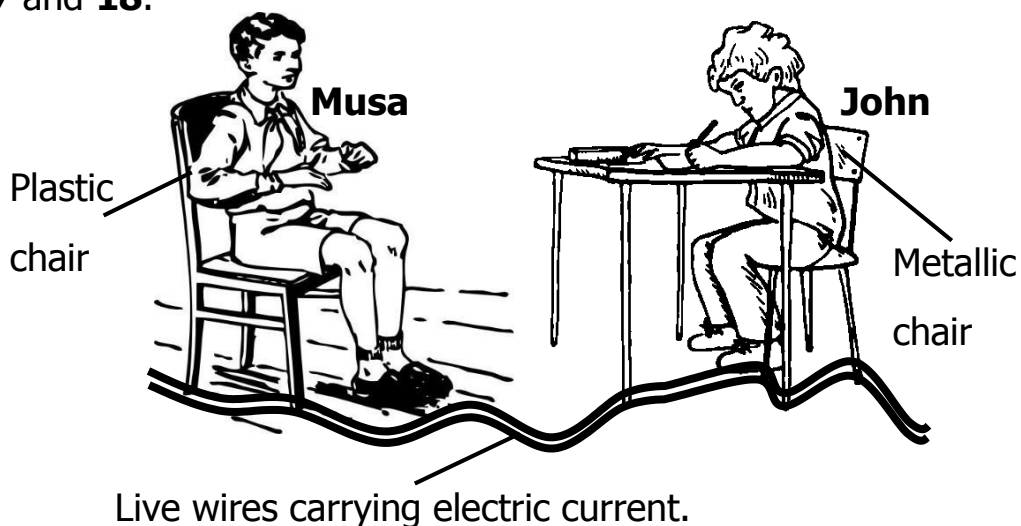
15. Why is the above item made of bright colours?

.....

16. How are delicate weather instruments protected from damage at a weather station?

.....

The diagram below shows two boys, Musa and John seated on different materials, one plastic chair and the other metallic. Study it and answer questions **17** and **18**.



17. Who of the two boys will be shocked by electricity?
.....
18. Give a reason to support your answer in (17) above.
.....
19. Name the blood cells manufactured in the bone marrows of long bones.
.....
20. When burning wood to form charcoal, logs of wood are covered with soil. State what would be formed if logs of wood are burnt openly without covering.
.....
21. State the reason why root tuber crops cannot be propagated through planting root tubers. ☐
.....
22. How is water similar to plants as resources?
.....
23. Besides enlargement of sexual organs, write **one** other primary sexual change common in adolescent boys and girls.
.....
24. State the function of white blood cells in the body.
.....
25. What type of pollination occurs in a flower where filaments grow taller than the style?
.....
26. Mention **one** biological way of controlling weeds.
.....
27. How is chemical digestion depends on mechanical digestion?
.....
28. Give the similarity between yeast and amoeba in terms of reproduction.
.....

29. Write down **one** advantage of hand milking.

.....

30. Name the substance in tobacco smoke which stimulates the releases of dopamine in the body.

.....

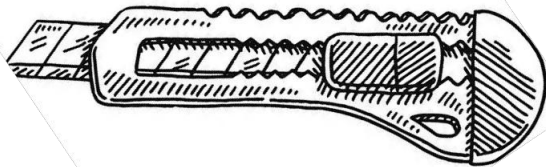
31. How does stale air from the VIP latrine pass through the vent pipe?

.....

32. Name the intestinal worm which feeds by diffusion.

.....

33. Give **one** way how the item below can be of use on a cattle farm.



.....

34. State any **one** substance absorbed in the stomach.

.....

35. Give **one** type of lice which attacks people.

.....

36. Name the part of a VIP which may control the spread of trachoma.

.....

37. A P.7 candidate broke down a bar magnet in two equal parts. What happened to each piece of the bar magnet?

.....

38. How do birds benefit from their hollow bones?

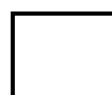
.....

39. What type of mosquitoes lay eggs with air floats?

.....

40. Name the deficiency disease prevented by feeding on the food value obtained from fish.

.....

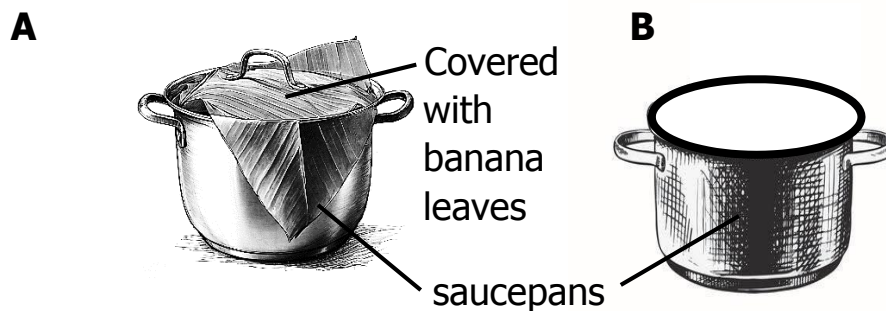


SECTION B: 60 MARKS

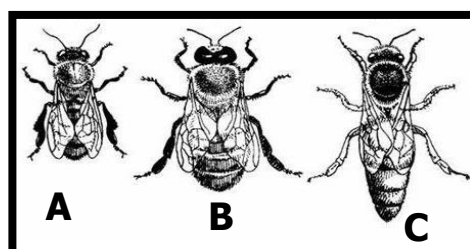
Questions **41** to **55** carry four marks each.

41. (a) State the energy changes which take place in the following gadgets:
- (i) Dynamo
 - (ii) Percolator
- (b) Write any **one** living source of electricity.
-
- (c) How does rural electrification help to conserve natural animal habitats like forests?
-

42. The diagrams below show **two** different saucepans **A** and **B** containing raw food. Study them carefully and answer the questions that follow.



- (a) In which of the above diagrams will food be cooked faster.
-
- (b) Give a reason to support your answer.
-
- (c) By what process does heat reach the raw food through the saucepan.
-
- (d) Besides cooking, give **one** other importance of heat in our daily life.
-
43. Below, are different types of honey bees. Use them to answer the questions that follow.



(a) Which of the above bees lays eggs in the hive?

.....

Write any **two** duties of a worker bee in a hive.

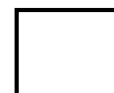
(i)

(ii)

(b) What food value do we obtain from eating honey?

.....

44. Match the following elements of PHC to their activities correctly.



A

B

Water and sanitation

dental flossing.

Maternal and child health

draining stagnant Water.

Family planning

prolonged breast feeding.

Oral and dental health

immunizing pregnant

women with T.T Vaccine.

(i) Water and sanitation.....

(ii) Maternal and child health.....

(iii) Family planning.....

(iv) Oral and dental health

45. (a) To what type of change do we group digestion in man?

.....

(b) Write **two** ways of managing body changes.

(i)

(ii)

(c) Why is burning referred to as a chemical change?

.....

46. (a) What does letter "**I**" stand for in the abbreviation **PIASCY**?

.....

Turn Over

(b) Give **two** life skills that children get through **PIASCY** messages.

(i)

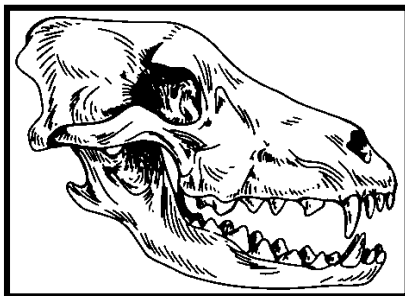
(ii)

(c) Write the **PIASCY** message which helps to the prevent **HIV/AIDS**.

.....



47. The diagram below shows a skull of a certain mammal. Use it to answer the questions that follow.



(a) To which sub class of mammals do animals with such a skull belong?

.....

(b) What kind of food do such mammals feed on?

.....

(c) How is an animal with such a skull adapted to its mode of feeding?

.....

(d) Give **one** example of an animal with such a skull.

.....

48. (a) Name **two** examples of fuel obtained from crude oil.

(i)

(ii)

(b) How are the fuels mentioned in **48(a)** above separated from crude oil?

.....

(c) Under which principle does the method in (b) above work?

.....

49. (a) Give **two** functions of muscles to the human body.

(i)

(ii)

(b) Name **one** organ in the body made of cardiac muscles.

.....

(c) Give the main reason why biceps and triceps are called antagonistic muscles.

.....

50. (a) Name the force which:

(i) holds molecules of water together.



.....

(ii) enables small insects like mosquitoes to stand on water.

.....

(b) Give **two** ways we can use “**air exerts pressure**” in our daily life.

(i)

(ii)

51. (a) Write **two** uses of magnets.

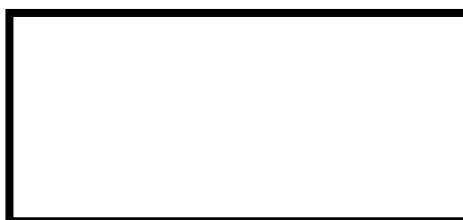
(i)

(ii)

(b) State the property of a magnet which enables a pilot to find direction.

.....

(c) In the space provided below, draw an illustration of magnets to show that “**unlike poles attract**”



52. (a) Why are rabbits given a block of salt to lick?

.....

(b) Okello’s rabbits have difficulty in breathing. Which disease are they suffering from?

.....

(c) Mention **two** advantages of keeping rabbits over cattle.

(i)

(ii)

53. (a) Write **two** agents of seed dispersal.

(i)

(ii)

(b) How are coconut seeds dispersed?

.....

(c) Give **one** way seed dispersal prevents extinction of plant species.

.....

54. (a) Write **two** components of plant glucose made during photosynthesis.

(i)

(ii)

(b) How does photosynthesis purify air?

.....

(c) Briefly write about a variegated leaf.

.....

.....

55. Use the words given in the box below to fill in the spaces below.

methane gas fermentation anaerobic sludge

Biogas is that is produced by rotting and

..... of organic matter. After the formation of

biogas, the waste material called is taken and

used as manure. Biogas is produced by respiration

with the help of anaerobic organisms.

END